



CONCRETE PRESSURE PIPE

AMIANIT OMAN CONCRETE PRODUCTS LLC

*P.O. BOX 417, CPO, POSTAL CODE 111
SULTANATE OF OMAN*

Contact GSM 94190925

Tel: 24446600, 24445800 Fax 24446611

Sales e-mail: amian@omzest.com





PRESTRESSED CONCRETE LINED CYLINDER PIPE AWWA C301 [L] Product Description

Prestressed Concrete Cylinder Pipe is manufactured according to AWWA C301 and designed according to AWWA C304 standards.

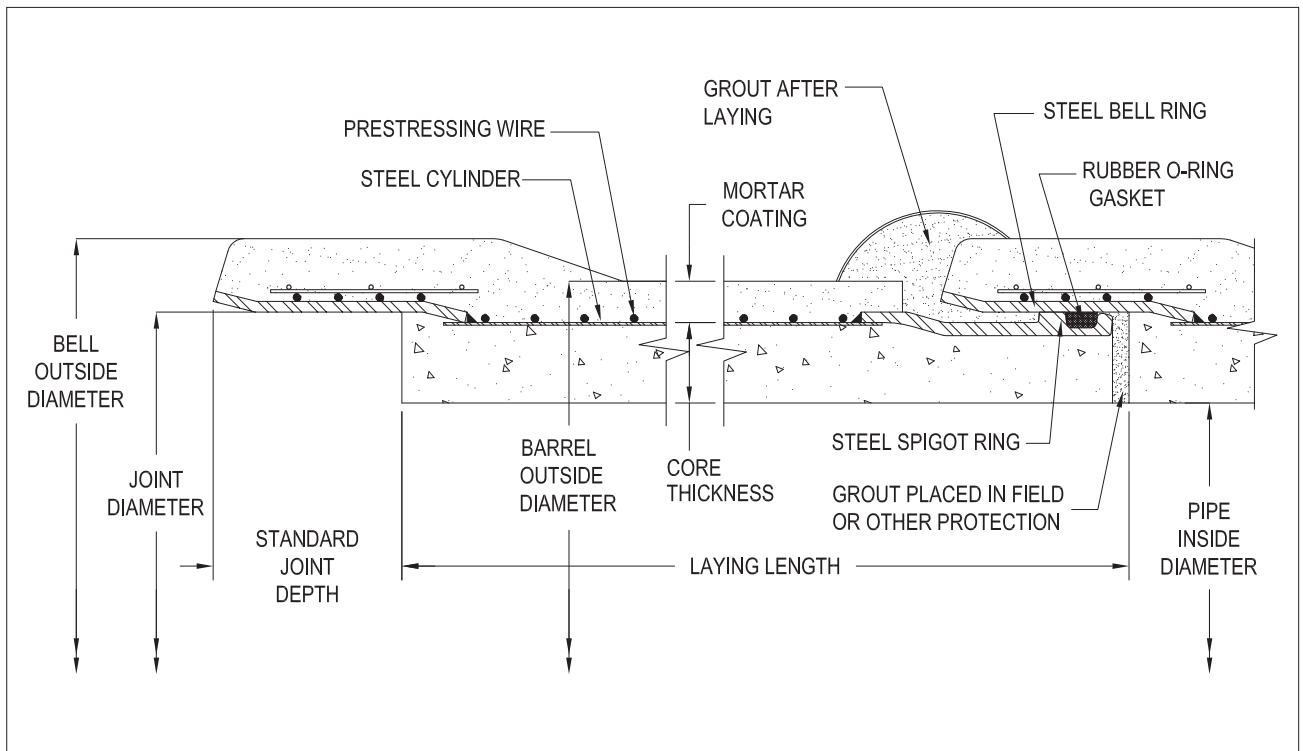
Prestressed Concrete Cylinder Pipe is used in a wide variety of applications which include transmission mains, distribution feeder mains, power plant cooling-water lines, sewage force mains, gravity sewers, subaqueous lines, water intake and discharge lines and industrial pressure lines.

Lined Cylinder Pipe AWWA C301 (L)

The pipe consists of a welded steel cylinder, steel joint rings, a centrifugally placed concrete lining, high tensile steel wire and a dense cement mortar coating over the prestressing wire and core. An O-ring rubber gasket is incorporated at each joint for water tightness and flexibility.

Contact our Sales Department (1.800.461.5632) for your project pricing.

LINED CYLINDER PIPE SECTION AWWA C301 [L]



PRESTRESSED CONCRETE LINED
CYLINDER PIPE AWWA C301 [L]
Dimensions



LINED CYLINDER PIPE - AWWA C301 [L]
Standard Dimensions

NOMINAL PIPE DIAMETER (mm)	PIPE INSIDE DIAMETER (mm)	CORE THICKNESS (mm)	STANDARD JOINT DEPTH (mm)	JOINT DIAMETER (mm)	APPROX. WEIGHT (kg/m)	BELL OUTSIDE DIAMETER (mm)	BARREL OUTSIDE DIAMETER (mm)	STANDARD LAYING LENGTH (m)
400	406	25	114	470	230	572	508	6.106
450	457	29	114	527	270	629	565	6.106
500	508	32	114	584	300	686	622	6.106
600	610	38	114	699	380	800	737	6.106
750	762	48	114	870	560	972	908	6.106
900	914	57	114	1041	710	1143	1080	6.106
1050	1067	67	114	1200	970	1302	1251	6.106
1200	1219	76	114	1372	1230	1473	1422	6.106
1350	1372	86	121	1565	1460	1667	1594	6.106
1500	1524	95	124	1738	1640	1838	1765	6.106



PRESTRESSED CONCRETE EMBEDDED CYLINDER PIPE AWWA C301 [E] Product Description

Prestressed Concrete Cylinder Pipe is manufactured according to AWWA C301 and designed according to AWWA C304 standards.

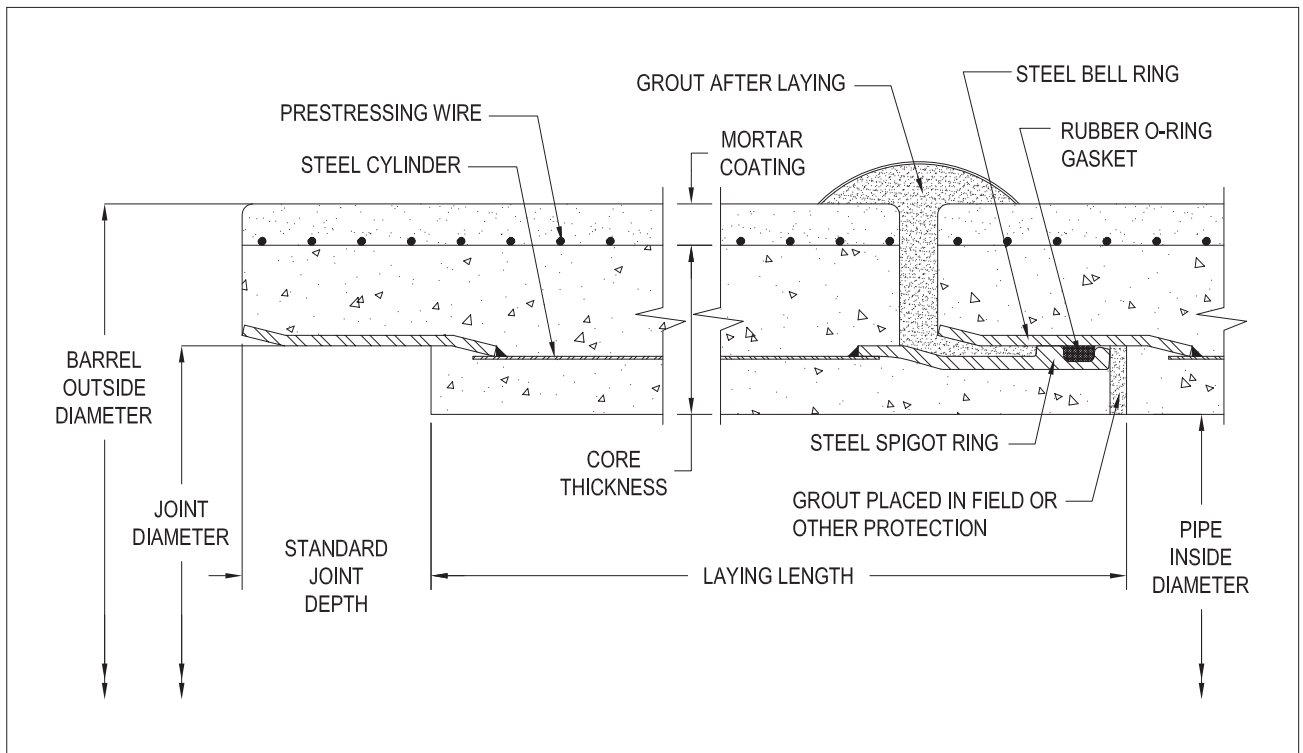
Prestressed Concrete Cylinder Pipe is used in a wide variety of applications which include transmission mains, distribution feeder mains, power plant cooling-water lines, sewage force mains, gravity sewers, subaqueous lines, water intake and discharge lines and industrial pressure lines.

Embedded Cylinder Pipe AWWA C-301 (E)

The pipe consists of a welded steel cylinder, steel joint rings, a vertically cast concrete core, high tensile steel wire and a dense cement mortar coating over the wire and the core. An O-ring rubber gasket is incorporated at each joint for water tightness and flexibility.

Contact our Sales Department (1.800.461.5632) for your project pricing.

EMBEDDED CYLINDER PIPE SECTION AWWA C301 [E]



PRESTRESSED CONCRETE EMBEDDED
CYLINDER PIPE AWWA C301 [E]
Dimensions



EMBEDDED CYLINDER PIPE - AWWA C301 [E]

Standard Dimensions

NOMINAL PIPE DIAMETER (mm)	PIPE INSIDE DIAMETER (mm)	CORE THICKNESS (mm)	STANDARD JOINT DEPTH (mm)	JOINT DIAMETER (mm)	APPROX. WEIGHT (kg/m)	BARREL OUTSIDE DIAMETER (mm)	STANDARD LAYING LENGTH (m)
1050	1067	89	114	1143	1120	1295	6.106
1200	1219	102	114	1302	1340	1473	6.106
1350	1372	102	130	1467	1490	1626	6.106
1500	1524	114	133	1622	1680	1803	6.106
1650	1676	127	137	1781	2240	1981	6.106
1800	1829	140	114	1943	2650	2159	6.106
1950	1981	152	143	2095	3070	2337	6.106
2100	2134	165	114	2255	3560	2518	6.106
2250	2286	165	149	2410	3780	2670	6.106
2400	2438	165	149	2569	4020	2822	6.106
2550	2591	165	152	2715	4320	2975	6.106
2700	2743	171	152	2873	4690	3140	6.106
2850	2896	181	152	3064	5140	3311	6.106
3000	3048	190	152	3216	6030	3483	4.887
3150	3200	200	152	3369	6260	3686	4.887
3300	3353	210	152	3521	6780	3826	4.887
3450	3505	219	152	3673	7370	3997	4.887
3600	3658	229	152	3826	7970	4169	4.887



NON-CYLINDER REINFORCED CONCRETE PRESSURE PIPE AWWA C302

Product Description

Non-Cylinder Reinforced Concrete Pressure Pipe – AWWA C302

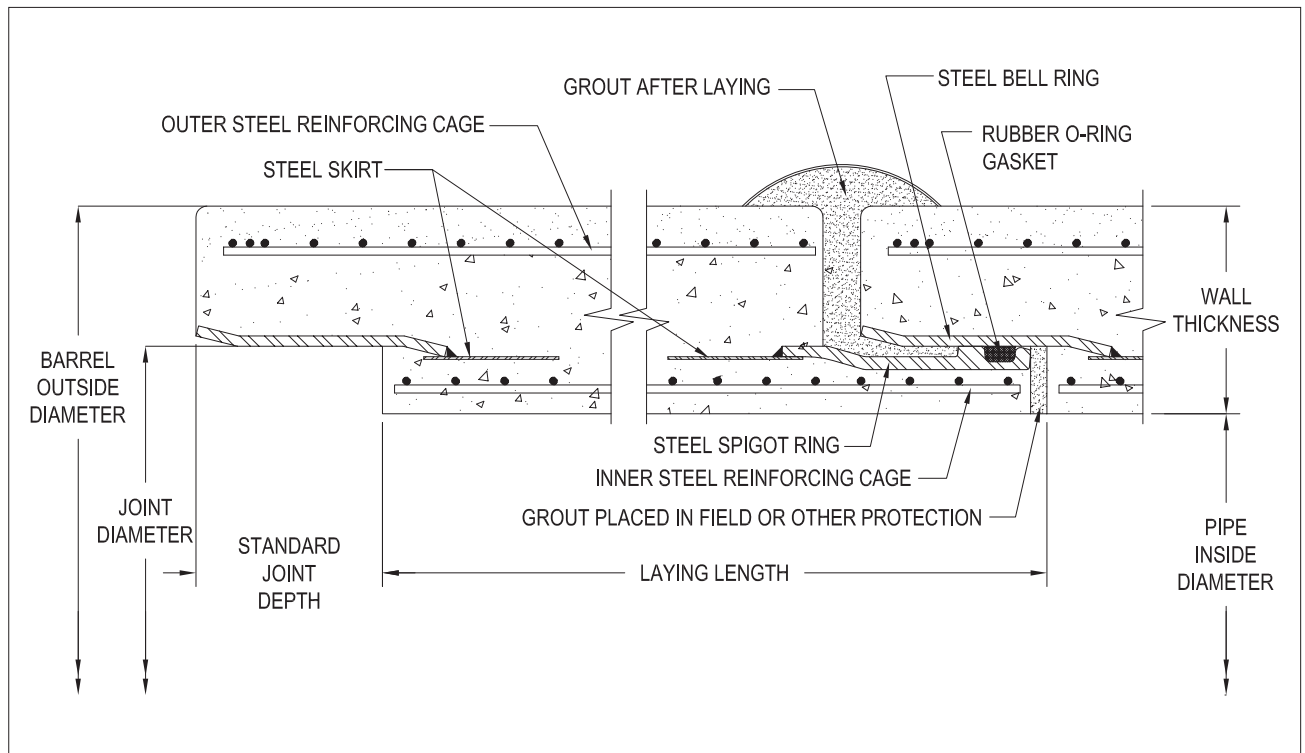
Non-Cylinder Reinforced Concrete Pressure Pipe AWWA C302 is manufactured according to AWWA C302 standard and designed according to AWWA M9 Manual.

Non-Cylinder Reinforced Concrete Pressure Pipe is used in applications where the working pressure is limited to 380 kPa (55psi). Typical applications include low pressure sewage force mains, gravity sewers, water intakes, outfalls and low pressure water supply systems.

The pipe does not require a steel cylinder, but contains reinforcing cages and incorporates welded steel bell and spigot joint rings encased in the concrete wall of the pipe.

Contact our Sales Department (1.800.461.5632) for your project pricing.

NON-CYLINDER REINFORCED CONCRETE PIPE SECTION AWWA C302



NON-CYLINDER REINFORCED CONCRETE PRESSURE PIPE AWWA C302

Dimensions



NON-CYLINDER REINFORCED CONCRETE PIPE - AWWA C302

Standard Dimensions

NOMINAL PIPE DIAMETER (mm)	PIPE INSIDE DIAMETER (mm)	WALL THICKNESS (mm)	STANDARD JOINT DEPTH (mm)	JOINT DIAMETER (mm)	APPROX. WEIGHT (kg/m)	BARREL OUTSIDE DIAMETER (mm)	STANDARD LAYING LENGTH (m)
900	914	76	114	991	940	1066	6.106
1050	1067	89	114	1143	1080	1245	6.106
1200	1219	102	114	1302	1341	1422	6.106
1350	1372	114	130	1467	1861	1600	6.106
1500	1524	127	133	1622	2308	1778	6.106
1650	1676	140	137	1781	2790	1956	6.106
1800	1829	152	114	1943	2590	2133	6.106
1950	1981	165	143	2095	3680	2311	6.106
2100	2134	178	114	2255	4220	2490	6.106
2250	2286	191	149	2410	4540	2668	6.106
2400	2438	203	149	2569	4800	2844	6.106

Information on 2550 mm to 3600 mm nominal pipe diameter is available upon request.



CONCRETE PRESSURE PIPE TAPPING SYSTEMS

LINED CYLINDER PIPE

Tapping prestressed concrete pressure pipe is a common occurrence in today's public works projects. Munro Concrete Products Ltd. field service representatives are fully equipped to provide the technical expertise, material and installation services to make service taps up to 1200mm in diameter (and larger under certain circumstances) on any type of pressure pipe. In most cases, this work can be done under pressure without interrupting service to customers.

For maximum tapping diameter of pipe, please see tables.

NOMINAL PIPE DIAMETER (mm)	MAXIMUM TAP DIAMETER (mm)
400	300
450	350
500	400
600	450
750	500
900	600
1050	750
1200	900
1350	1050
1500	1200

EMBEDDED CYLINDER PIPE

NOMINAL PIPE DIAMETER (mm)	MAXIMUM TAP DIAMETER (mm)
1050	750
1200	900
1350-3600	*

*Two sizes smaller than nominal pipe diameter

*AMIAN TIT OMAN CONCRETE PRODUCTS LLC
P.O. BOX 417, CPO, POSTAL CODE 111
SULTANATE OF OMAN
Contact GSM 94190925
Tel: 24446600, 24445800 Fax 24446611
Sales e-mail: amian@omzest.com*

Address:

8807 Simcoe Road #56,
Utopia, ON L0M1T0

Telephone:

705.734.2892
1.800.461.5632

Engineering Fax:

705.734.2270

Administration Fax:

705.734.2920



sales@munroconcrete.com

www.munroconcrete.com

All inquiries, call toll free:

800.461.5632